

NOTE:
PROVIDE AIR AND DRAIN OUTLETS
& DRAIN VAULTS AS NECESSARY FOR
TEMPORARY 24" W.M. TO BE DETERMINED
BY CONTRACTOR.

NOTES:
SEE GENERAL PLAN SHEET NO 22 FOR PLAN OF
36" GATE VALVE, 24" TEMP. WATER MAIN AND VALVE
& 12" INSERTING VALVE.
36" GATE VALVE, & CHAMBER @ E CONST. STA.
25+20.00, 2' LT. SEE DETAIL SHT. 28-B
TEMP. 24" BRANCH SLEEVE & VALVE @ E CONST.
STA. 25+34.00, 9' LT.
12" INSERTING VALVE, NO 4 VALVE BOX, @ E
CONST. STA. 24+59.00, 24' RT.

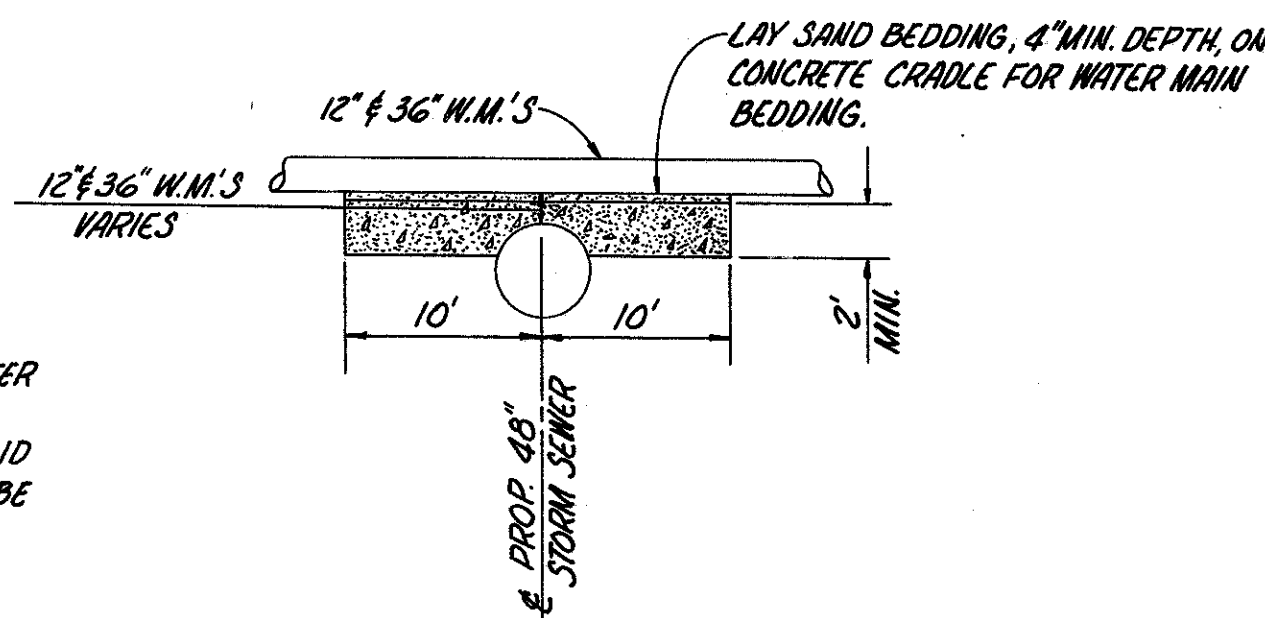
NOTE:
CONTRACTOR SHALL SUPPLY FIELD
MEASUREMENTS FOR CLOSURE
SECTION.

PLAN - 36", 12" & 8" RELOCATED WATER MAIN - FULTON ROAD

NOTES:
SEE SHEET NO 22 FOR PLAN OF 36" GATE VALVE,
24" TEMP. WATER MAIN & 8" INSERTING VALVE.
36" GATE VALVE, AND CHAMBER @ E CONST. STA.
16+00.00, 6' RT. - SEE DETAIL SHT. 28-B
TEMP. 24" BRANCH SLEEVE & VALVE @ E CONST.
STA. 15+91.82, 3' RT.

NOTES:
TEMPORARY WATER MAINS:
THE 24" TEMPORARY WATER MAINS SHALL BE REMOVED AFTER
THE NEW 36" W.M. IS INSTALLED. AFTER THE 24" PIPE IS
REMOVED, VALVE BOXES SHALL BE REMOVED FROM & BLIND
FLANGES OR PLUGS WITH CONCRETE PIERS SHALL BE
ATTACHED TO EACH 24" VALVE. THE EXISTING 36" W.M.
IS CLASS "B".

NOTES: 36" VALVES
SERVICE IN THE FULTON RD. 36" W.M. CANNOT BE DISCONTINUED SIMULTANEOUSLY
WITH SERVICE INTERRUPTION IN THE DENISON AVE. 30" W.M. SERVICE IN THE FULTON
RD. 36" W.M. CAN BE DISCONTINUED ONLY ON WEEK-ENDS & ONLY WITH WRITTEN
PERMISSION FROM THE DIRECTOR. THE WORK INVOLVED SHALL CONTINUE 24 HRS. PER
DAY UNTIL COMPLETED.
SEE SHEET 28-B FOR DETAILS & PAYMENT.



DETAIL OF CONCRETE CRADLE FOR 12" & 36" WATER MAINS

IST. HIGH SERVICE DISTRICT

DEPARTMENT OF PUBLIC UTILITIES
DIVISION OF WATER AND HEAT
CLEVELAND, OHIO

APPROVED MARCH 26, 1965

V. M. De Mello DIRECTOR OF PUBLIC UTILITIES
J. E. Stanton COMMISSIONER OF WATER AND HEAT
Frank J. Mital COMMISSIONER-DIVISION OF UTILITIES-ENGINEERING
J. R. Conner ENGINEER OF CONSTRUCTION & SURVEYS
William J. Loney ENGINEER OF DESIGN

SCALE 1"=20'

RACKOFF ASSOCIATES
ENGINEERS COLUMBUS, OHIO

MEDINA FREEWAY
RELOCATION OF 36", 12" & 8" W.M.
FULTON ROAD

| Designed | Drawn | Traced | Checked | Revised | Date | Reviewed |
|----------|-------|--------|---------|---------|------|----------|
| | | | | | | |

| DESCRIPTION | INVENTED | CHECKED |
|-------------|----------|---------|
| TOPOGRAPHY | DATE | DATE |
| PAYMENT | DATE | DATE |
| QUANTITY | DATE | DATE |